



# MONTHLY MEMBERSHIP PROGRESS REPORT

District 321C1

Results as of: 06/30/2018

GMT: ANIL TULSYAN

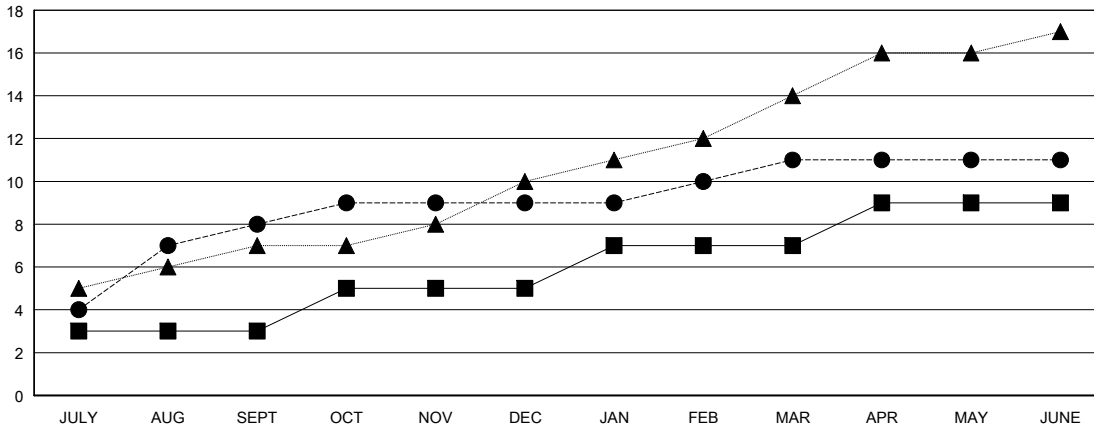
LOCATION INDIA

GMT CA

Clubs			
RESULTS FOR 2017-2018			
QUARTER	NEW CLUB GOAL	NEW CLUBS	DROPPED CLUBS
JULY/AUG/SEPT	3	8	0
OCT/NOV/DEC	2	1	5
JAN/FEB/MAR	2	2	0
APR/MAY/JUNE	2	0	6

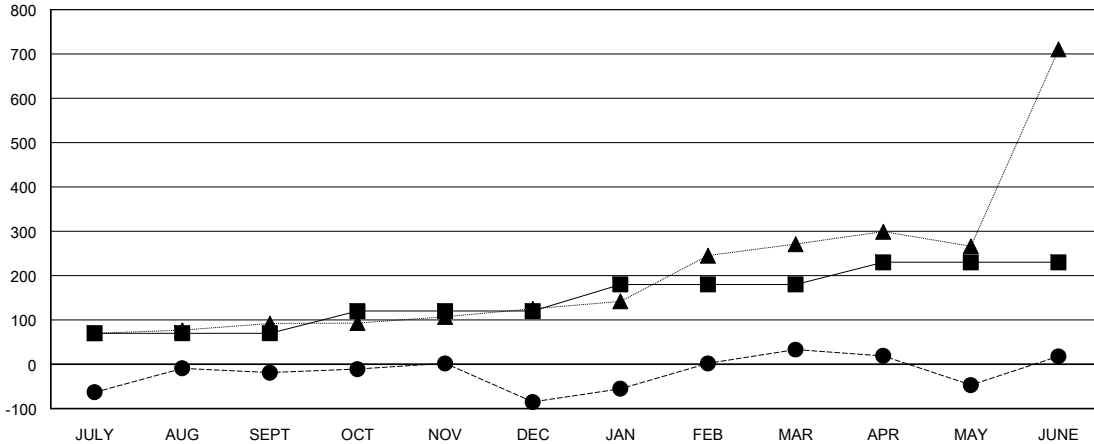
Members			
RESULTS FOR 2017-2018			
QUARTER	MEMBER GROWTH NET GOAL	MEMBER GROWTH ACTUAL	DROPPED MEMBERS ACTUAL (including transfers)
JULY/AUG/SEPT	70	249	249
OCT/NOV/DEC	50	145	202
JAN/FEB/MAR	60	282	111
APR/MAY/JUNE	50	515	513

GOALS AND ACTUAL NEW CLUBS CUMULATIVE



- - CURRENT YEAR GOALS FOR NEW CLUBS
- - CURRENT YEAR ACTUAL NEW CLUBS
- ▲ - LAST YEAR ACTUAL NEW CLUBS

GOALS AND ACTUAL MEMBERS CUMULATIVE



- - MEMBER GROWTH NET GOAL
- - MEMBER GROWTH ACTUAL
- ▲ - LAST YEAR MEMBERSHIP ACTUAL

DROPPED CLUBS: 11

109 CLUBS OF 160 ADDED 1 OR MORE NEW MEMBERS

GENDER DISTRIBUTION  
 MALE 3,578 (75.53%)  
 FEMALE 1,159 (24.47%)  
 Women Percentage Fiscal Year Goal: 10%

DROPPED MEMBERS	
DECEASED	11
CLUB CANCELLED	203
OTHER	861
<b>TOTAL</b>	<b>1,075</b>

[CLICK HERE FOR CUMULATIVE MEMBERSHIP DATA](#)

TOTAL FAMILY UNIT MEMBERS	0
FAMILY MEMBERS PAYING HALF DUES	0